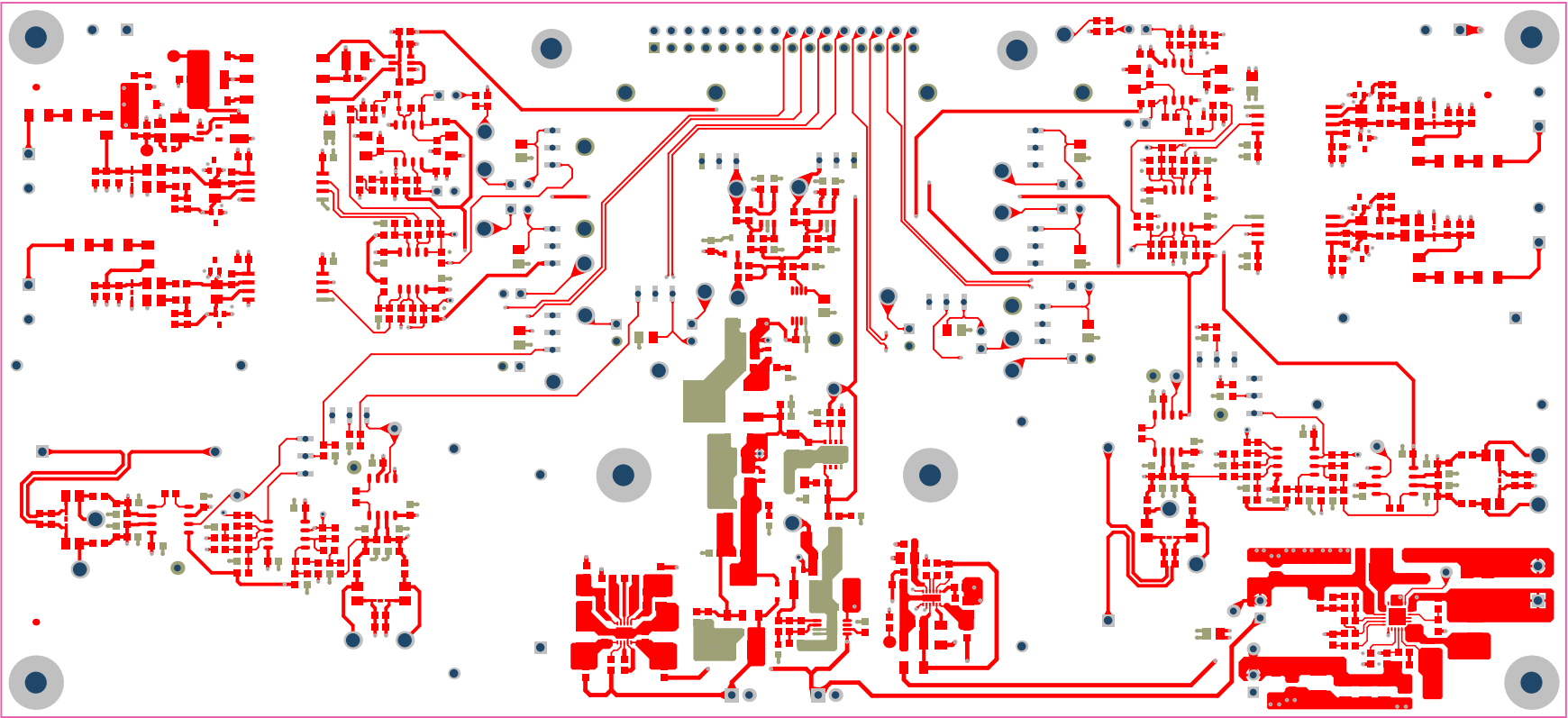
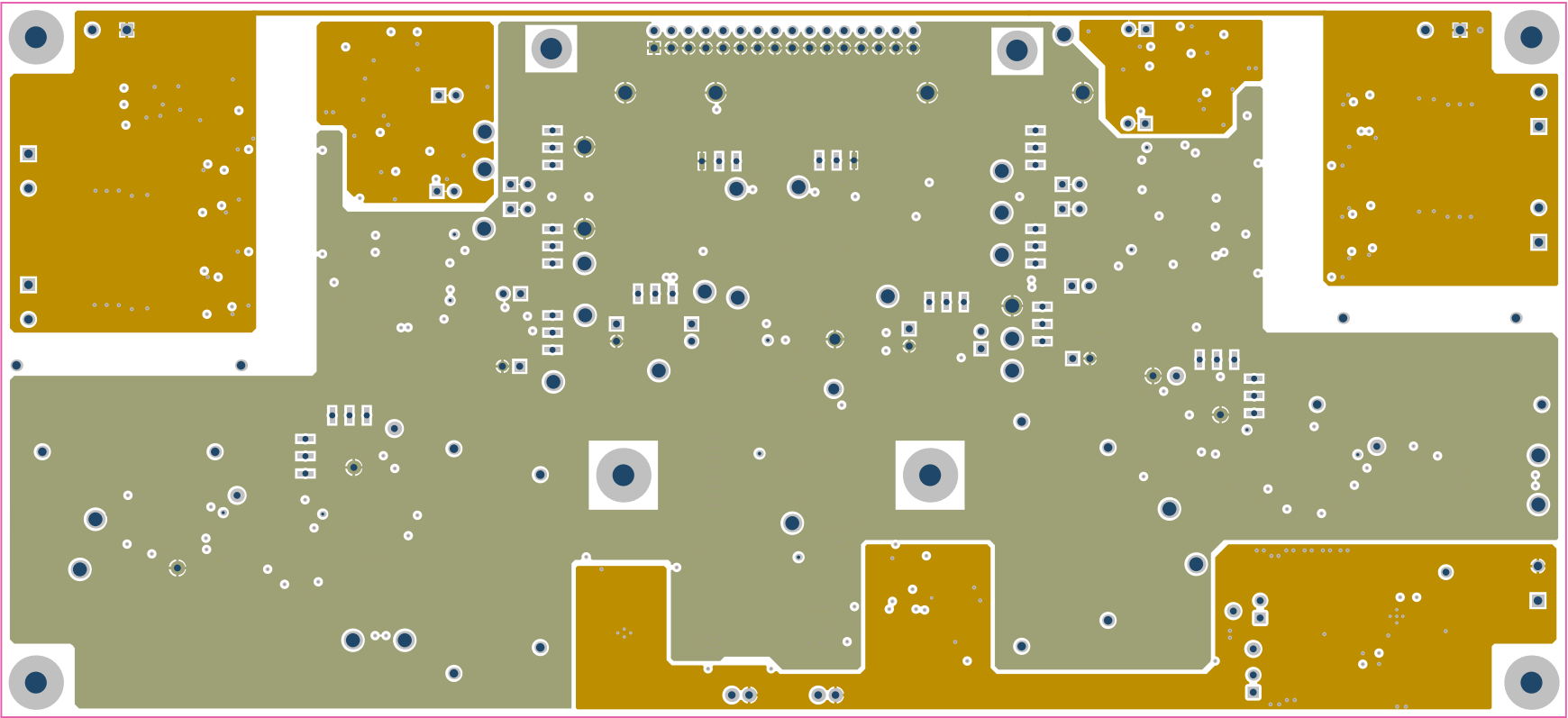


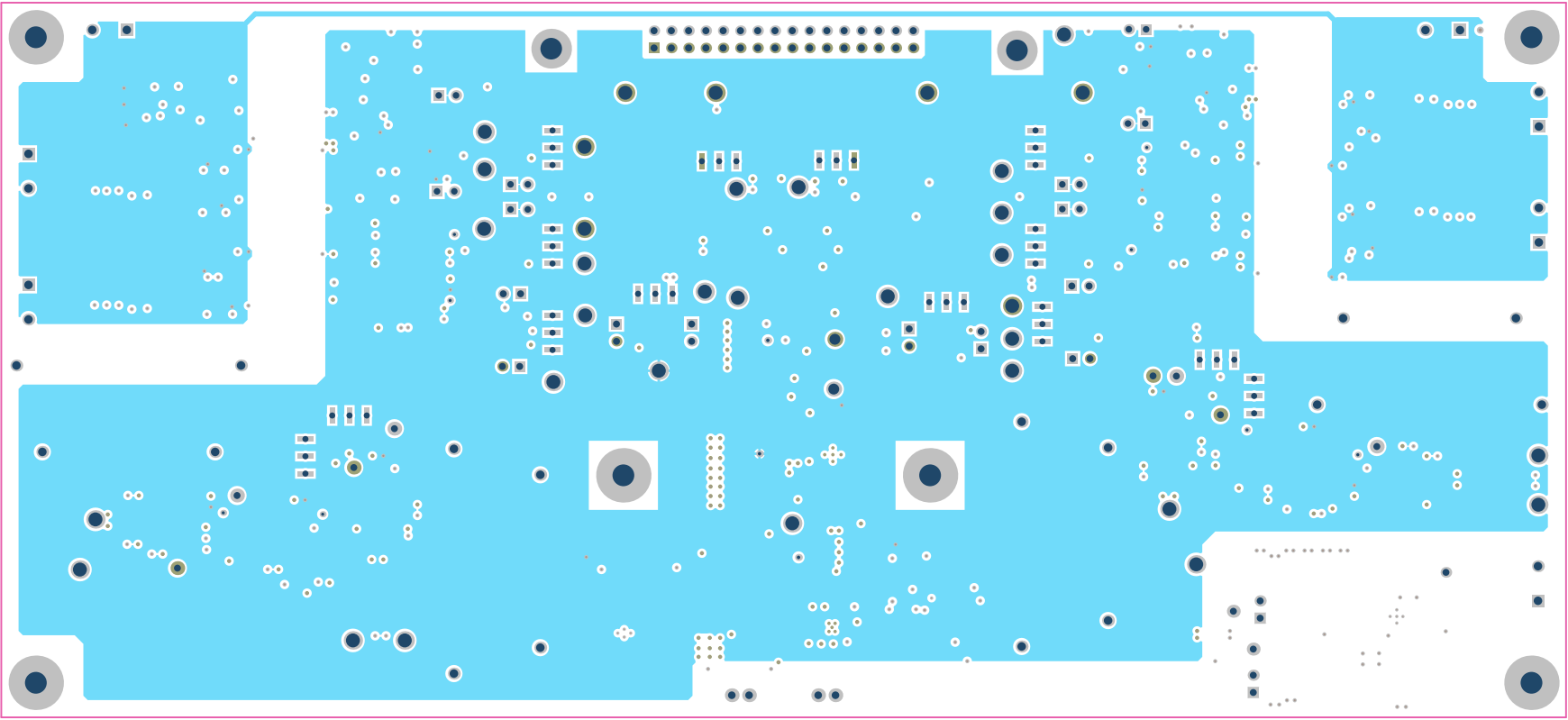
ALL ARTWORK VIEWED FROM TOP SIDE	BOARD #: TIDA-834_ISO	REV: E2	SUN REV: Not In VersionControl
LAYER NAME = Top Solder	TID #: TIDA-00834_ISO		
PLOT NAME = Top Solder Mask	GENERATED : 11/25/2016 3:20:09 PM		TEXAS INSTRUMENTS



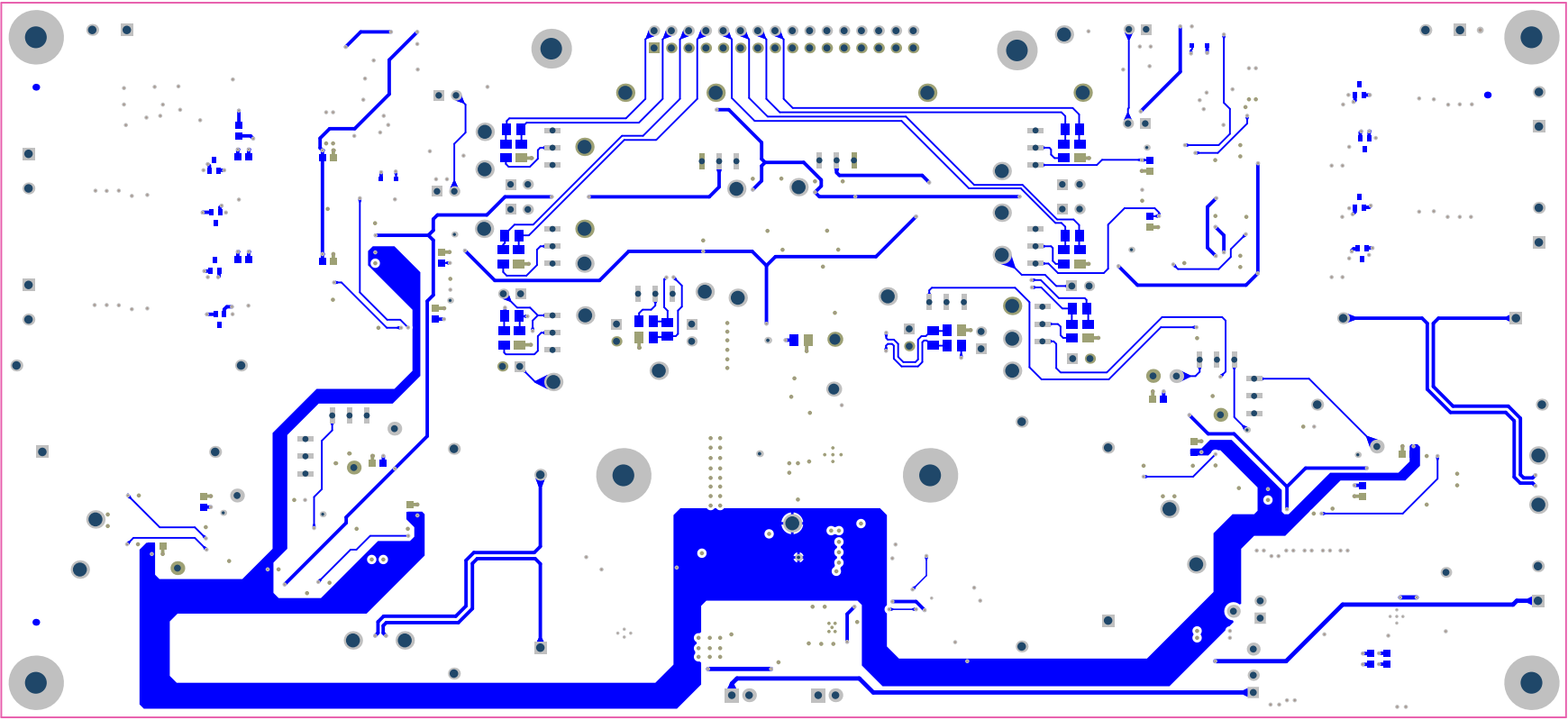
ALL ARTWORK VIEWED FROM TOP SIDE	BOARD #: TIDA-834_ISO	REV: E2	SUN REV: Not In VersionControl
LAYER NAME = Top Layer	TID #: TIDA-00834_ISO		
PLOT NAME = Top Layer	GENERATED : 11/25/2016 3:20:13 PM	TEXAS INSTRUMENTS	



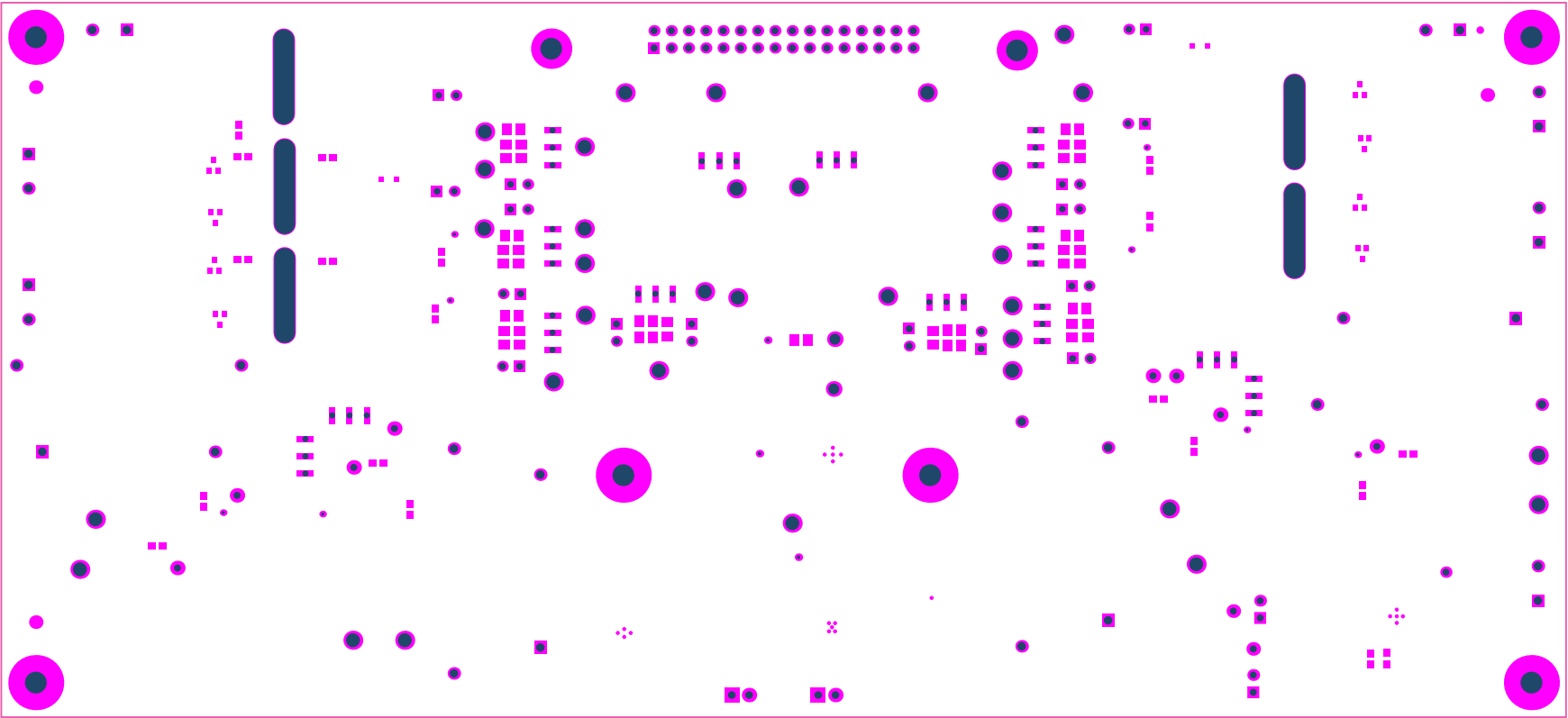
ALL ARTWORK VIEWED FROM TOP SIDE	BOARD #: TIDA-834_ISO	REV: E2	SUN REV: Not In VersionControl
LAYER NAME = GND	TID #: TIDA-00834_ISO		
PLOT NAME = Signal Layer 1	GENERATED : 11/25/2016 3:20:17 PM	TEXAS INSTRUMENTS	



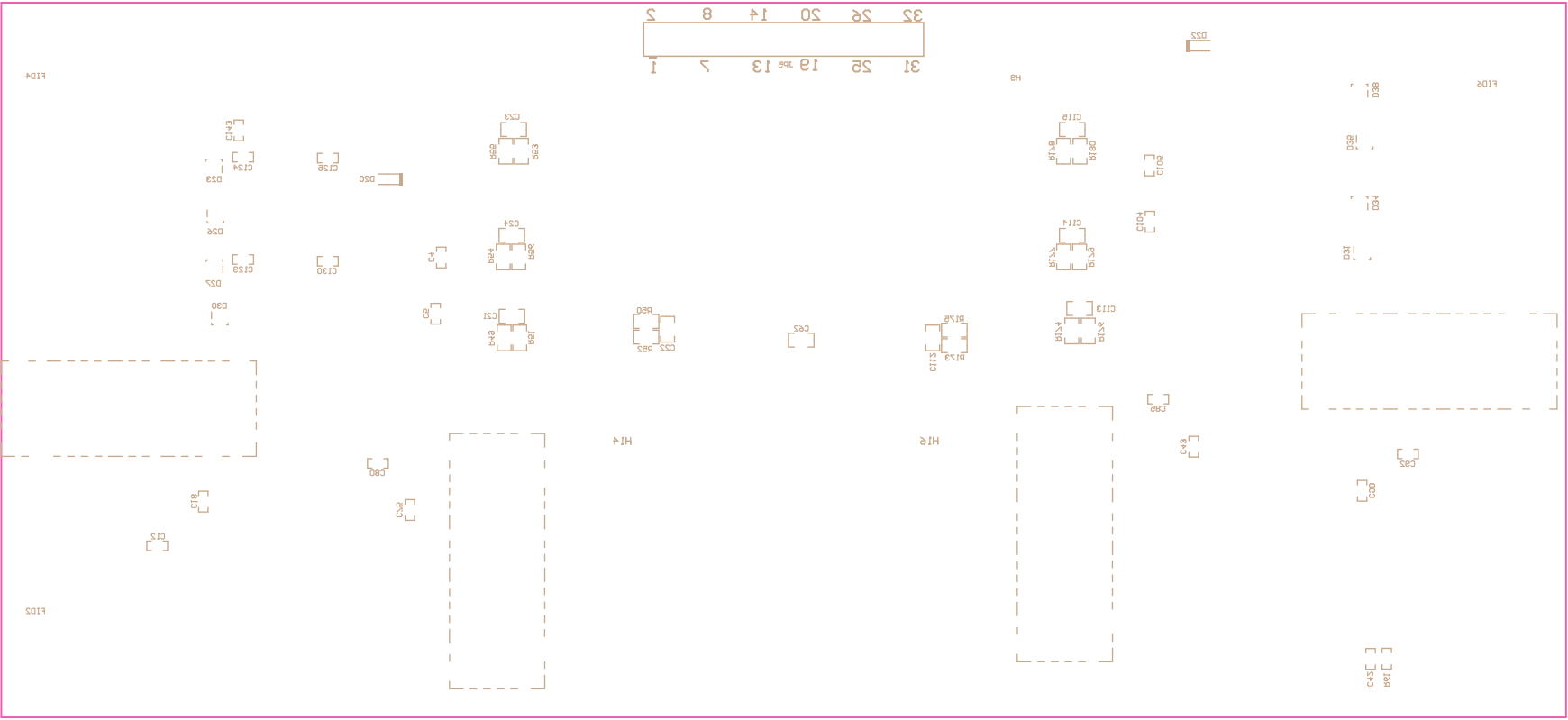
ALL ARTWORK VIEWED FROM TOP SIDE	BOARD #: TIDA-834_ISO	REV: E2	SUN REV: Not In VersionControl
LAYER NAME = PWR	TID #: TIDA-00834_ISO		
PLOT NAME = Signal Layer 2	GENERATED : 11/25/2016 3:20:20 PM	TEXAS INSTRUMENTS	



ALL ARTWORK VIEWED FROM TOP SIDE	BOARD #: TIDA-834_ISO	REV: E2	SUN REV: Not In VersionControl
LAYER NAME = Bottom Layer	TID #: TIDA-00834_ISO		
PLOT NAME = Bottom Layer	GENERATED : 11/25/2016 3:20:24 PM	TEXAS INSTRUMENTS	



ALL ARTWORK VIEWED FROM TOP SIDE	BOARD #: TIDA-834_ISO	REV: E2	SUN REV: Not In VersionControl
LAYER NAME = Bottom Solder	TID #: TIDA-00834_ISO		
PLOT NAME = Bottom Solder Mask	GENERATED : 11/25/2016 3:20:28 PM		TEXAS INSTRUMENTS

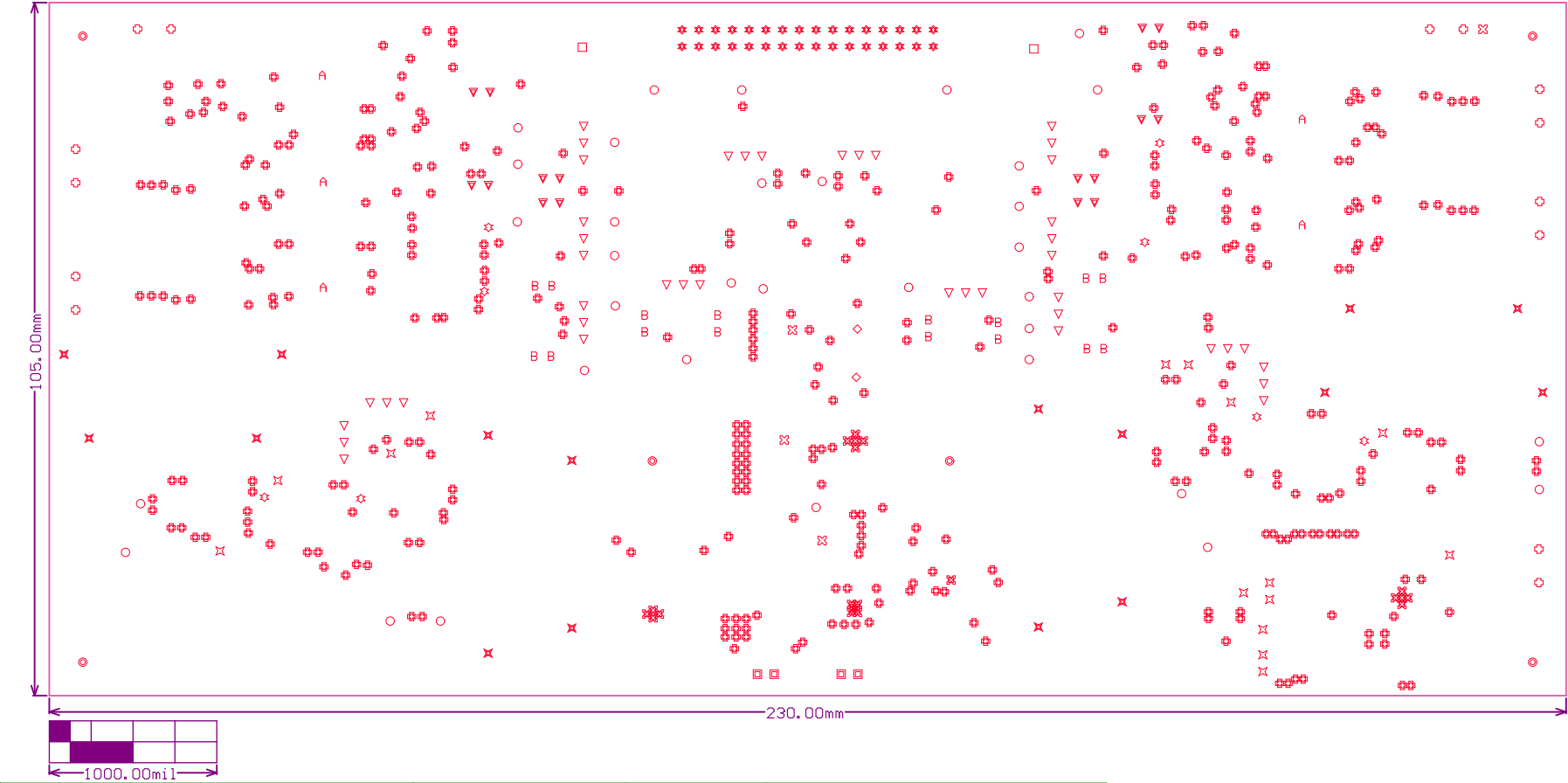


ALL ARTWORK VIEWED FROM TOP SIDE	BOARD #: TIDA-834_ISO	REV: E2	SUN REV: Not In VersionControl
LAYER NAME = Bottom Overlay	TID #: TIDA-00834_ISO		
PLOT NAME = Bottom Overlay	GENERATED : 11/25/2016 3:20:32 PM	TEXAS INSTRUMENTS	

Symbol	Quantity	Finished Hole Size	Plated	Hole Type	Drill Layer Pair	Hole Length	Routed Path Length
✕	20	7.87mil (0.200mm)	PTH	Round	Top Layer - Bottom Layer	-	-
⊕	388	12.00mil (0.305mm)	PTH	Round	Top Layer - Bottom Layer	-	-
⊗	8	17.72mil (0.450mm)	PTH	Round	Top Layer - Bottom Layer	-	-
⊠	4	20.00mil (0.508mm)	PTH	Round	Top Layer - Bottom Layer	-	-
▽	42	35.04mil (0.890mm)	PTH	Round	Top Layer - Bottom Layer	-	-
▽	16	38.00mil (0.965mm)	PTH	Round	Top Layer - Bottom Layer	-	-
✕	15	40.00mil (1.016mm)	PTH	Round	Top Layer - Bottom Layer	-	-
B	16	40.16mil (1.020mm)	PTH	Round	Top Layer - Bottom Layer	-	-
★	32	40.94mil (1.040mm)	PTH	Round	Top Layer - Bottom Layer	-	-
■	4	44.00mil (1.118mm)	PTH	Round	Top Layer - Bottom Layer	-	-
⊕	14	49.21mil (1.250mm)	PTH	Round	Top Layer - Bottom Layer	-	-
✕	16	49.37mil (1.254mm)	PTH	Round	Top Layer - Bottom Layer	-	-
◇	2	63.00mil (1.600mm)	PTH	Round	Top Layer - Bottom Layer	-	-
○	34	80.71mil (2.050mm)	PTH	Round	Top Layer - Bottom Layer	-	-
□	2	125.00mil (3.175mm)	PTH	Round	Top Layer - Bottom Layer	-	-
●	6	125.98mil (3.200mm)	PTH	Round	Top Layer - Bottom Layer	-	-
⌏	5	120.00mil (3.048mm)	NPTH	Slot	Top Layer - Bottom Layer	550.00mil (13.970mm)	430.00mil (10.922mm)
	624 Total						

Slot definitions : Routed Path Length = Calculated from tool start centre position to tool end centre position.
Hole Length = Routed Path Length + Tool Size = Slot length as defined in the PCB layout

FOR 7.87MIL DRILL +0/-7.87MIL
FOR 12MIL DRILL +0/-12MIL
FOR PTH DRILL +/-3MIL
FOR NPTH DRILL +/-2MIL



ALL ARTWORK VIEWED FROM TOP SIDE	BOARD #: TIDA-834_ISO	REV: E2	SUN REV: Not In VersionControl
LAYER NAME = Drill Drawing	TID #: TIDA-00834_ISO		
PLOT NAME = Drill Drawing	GENERATED : 11/25/2016 3:20:37 PM	TEXAS INSTRUMENTS	